

Sashiko with Someone in Mind

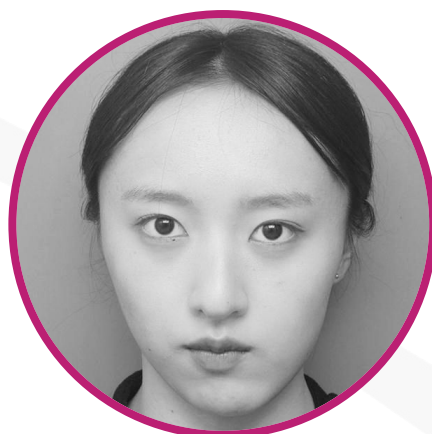
ABOUT

Tomoko Yamada is the Chairman of NPO Nanbu Mingei and leads the Nanbu Hishizashi Research Group. As a representative of Tsuzureya and a certified Aomori Prefecture Nanbu Hishizashi Traditional Craftsman, she is a dyeing artist who utilizes local natural plants. Born in Hachinohe, Aomori Prefecture, Tomoko studied under the traditional craftsman Amano Yayoi in 2005. She became independent in 2011 and launched the brand "Tsuzureya." Nanbu Hishizashi is a traditional sashiko style with a long history in southern Aomori Prefecture.



Tomoko Yamada

hishizashi.com



Tsubaki Yamada

hishizashi.com

Tsubaki Yamada is the eldest daughter of a traditional craftsman. Tsubaki pursued art in high school and is currently interested in folk costumes from around the world.

KEYWORDS

Photo, Thoughts, Sashiko, Ancestors, Achievement.

OVERVIEW

Sashiko is a traditional Japanese stitching technique celebrated for its intricate, repetitive patterns and versatile applications. Originating from the Nambu region of Aomori Prefecture, Sashiko Nambu represents a distinctive variation characterized by its unique designs and the use of locally sourced, indigo-dyed fabrics. Historically, this technique served practical purposes by reinforcing clothing for farmers and laborers, while also reflecting the cultural heritage and craftsmanship of the area. Today, Sashiko Nambu continues to thrive as a functional art form, preserving regional identity and emphasizing the beauty of simplicity and sustainability in textile practices, making it a meaningful expression of both tradition and innovation.

METHODOLOGY

Mingei-handicrafts, once considered to be "beauty of utility," have been pushed into mass production by machines and are now seen as old and unnecessary. However, by working with one's hands while thinking of someone, they can be utilized as "beauty of the heart," which is necessary in the modern age. This workshop will explore the space of thinking of someone in your roots, use sashiko (Nambu diamond stitching) to create a number, alphabets, or a traditional diamond pattern related to that root.

LOCATION

Ahmedabad

MAXIMUM PARTICIPANTS

12